



# MAQ<sup>®</sup>20

## Industrial Data Acquisition and Control System

MA1062

MAQ20-ISOMV

MAQ20-ISOV

MAQ20-ISOI

### Hardware User Manual



**MAQ20-ISOMV/-ISOV/-ISOI Hardware User Manual**  
**MA1062 Rev. A – August 2017**  
**© 2017 Dataforth Corporation. All Rights Reserved.**  
**ISO9001:2008-Registered QMS**

The information in this manual has been checked carefully and is believed to be accurate; however, Dataforth assumes no responsibility for possible inaccuracies or omissions. Specifications are subject to change without notice.

The information, tables, diagrams, and photographs contained herein are the property of Dataforth Corporation. No part of this manual may be reproduced or distributed by any means, electronic, mechanical, or otherwise, for any purpose other than the purchaser's personal use, without the express written consent of Dataforth Corporation.

MAQ<sup>®</sup>20 is a registered trademark of Dataforth Corporation.  
ReDAQ<sup>®</sup> is a registered trademark of Dataforth Corporation  
Modbus<sup>®</sup> is a registered trademark of the Modbus Organization, Inc.  
LabVIEW<sup>™</sup> is a trademark of National Instruments Corporation

## Table of Contents

1.0	System Features .....	1
2.0	System Description and Documentation .....	2
3.0	Unpacking .....	3
4.0	Module Dimensions and Input Connections .....	3
5.0	Installation .....	5
6.0	Building a System .....	6
7.0	Maintaining a System .....	7
8.0	Expanding a System .....	8
9.0	MAQ20 I/O Module Registration .....	9
10.0	Range Selection, Channel Enable & Reading Signals .....	12
11.0	Alarm Functions .....	14
12.0	Setting and Monitoring Alarms .....	16
13.0	Signal Averaging .....	18
14.0	Reset Functions .....	19
15.0	Module Identification and Status Registers.....	20
16.0	LED Indicators.....	20
17.0	Specifications .....	22
18.0	MAQ20-ISOMV, MAQ20-ISOV & MAQ20-ISOI Address Map and Range Table.....	23

## About Dataforth Corporation

“Our passion at Dataforth Corporation is designing, manufacturing, and marketing the best possible signal conditioning, data acquisition, and data communication products. Our mission is to set new standards of product quality, performance, and customer service.” Dataforth Corporation, with more than thirty years of experience, is the worldwide leader in Instrument Class® Industrial Electronics – rugged, high performance signal conditioning, data acquisition, and data communication products that play a vital role in maintaining the integrity of industrial automation, data acquisition, and quality assurance systems. Our products directly connect to most industrial sensors and protect valuable measurement and control signals and equipment from the dangerous and degrading effects of noise, transient power surges, internal ground loops, and other hazards present in industrial environments.

Dataforth spans the globe with more than 50 International Distributors and US Representative Companies. Our customers benefit from a team of over 130 sales people highly trained in the application of precision products for industrial markets. In addition, we have a team of application engineers in our Tucson factory ready to solve any in-depth application questions. Upon receipt of an RFQ or order, our Customer Service Department provides fast one-day delivery information turnaround. We maintain an ample inventory that allows small quantity orders to be shipped from stock.

Dataforth operates under an ISO9001:2008 quality management system.

## Contacting Dataforth Corporation

Contact Method	Contact Information
<b>E-Mail:</b> Technical Support	<a href="mailto:techinfo@dataforth.com">techinfo@dataforth.com</a>
<b>Website:</b>	<a href="http://www.dataforth.com">www.dataforth.com</a>
<b>Phone:</b>	520-741-1404 and toll free 800-444-7644
<b>Fax:</b>	520-741-0762
<b>Mail:</b>	Dataforth Corporation 3331 E. Hemisphere Loop Tucson, AZ 85706 USA

## Errata Sheets

Refer to the Technical Support area of Dataforth’s website ([www.dataforth.com](http://www.dataforth.com)) for any errata information on this product.

## 1.0 System Features

The MAQ20 Data Acquisition System encompasses more than 30 years of design excellence in the process control industry. It is a family of high performance, DIN rail mounted, programmable, multi-channel, industrially rugged signal conditioning I/O and communications modules.

### Instrument Class Performance

- $\pm 0.035\%$  Accuracy
- Industry leading  $\pm 0.3\text{C}$  CJC Accuracy over full operating temperature range
- Ultra low Zero and Span Tempco
- Over-range on one channel does not affect other channels
- 1500Vrms Channel-to-Bus Isolation
- 240Vrms Continuous Field I/O Protection
- ANSI/IEEE C37.90.1 Transient Protection
- Ventilated Communications and I/O Modules
- Industrial Operating Temperature of  $-40^{\circ}\text{C}$  to  $+85^{\circ}\text{C}$
- Wide Range 7-34VDC Power
- CE Compliant, UL/CUL Listing and ATEX Compliance pending

### Industry Leading Functionality

- The system is a Modbus Server and can be operated remotely with no local PC
- Up to 4GB of logged data can be transferred via FTP during real-time acquisition
- Up to 24 I/O modules, or 384 channels, per system, per 19" rack width
- Per-channel configurable for range, alarms, and other functions
- Backbone mounts within DIN rail and distributes power and communications
- System firmware automatically registers the installation and removal of I/O modules
- I/O modules can be mounted remotely from the Communications Module
- Equal load sharing power supply modules allow for system expansion
- Hot Swappable I/O modules with Field-side pluggable terminal blocks on most models
- Sophisticated package enables high density mounting in 3U increments
- DIN Rail can be mounted on a continuous flat panel or plate

### Distributed Processing Enables Even More Functionality

- Output modules are programmable for user-defined waveforms
- Discrete I/O modules have seven high level functions:
  - Pulse Counter
  - Frequency Counter
  - Waveform Measurement
  - Time Between Events
  - Frequency Generator
  - PWM Generator
  - One-Shot Pulse Generator

### Multiple Software Options

- Intuitive Graphical Control Software
  - ReDAQ Shape Graphical HMI Design & Runtime Solution
  - IPEmotion Multi-Vendor and Multi-Language Solution
  - Programming examples and LabVIEW VIs
  - OPC Server
  - Application Program Interface (API)

## 2.0 System Description and Documentation

A MAQ20 Data Acquisition System must have as a minimum a Communications Module, a Backbone, and one I/O Module. Examples include:

[MAQ20-COM2, -COM4](#) Communications Module, Ethernet, USB & RS-232 or RS-485 Interface

[MAQ20-JTC, -KTC, -TTC, -RSTC](#) Type J, K, T, R, or S Thermocouple Input Module

[MAQ20-mVDN, -VSN, -VDN](#) Voltage Input Module

[MAQ20-ISN, -IDN](#) Process Current Input Module

[MAQ20-IO, -VO](#) Process Current Output and Process Voltage Output Module

[MAQ20-BKPL4, -BKPL8, -BKPL16, -BKPL24](#) 4, 8, 16, or 24 Channel System Backbone

Refer to [Dataforth MAQ20 Industrial Data Acquisition & Control System](#) for a complete listing of available modules and accessories.

System power is connected to the Communications Module, which in turn powers the I/O modules. For systems with power supply requirements exceeding what the Communications Module can provide, the [MAQ20-PWR3](#) Load Share Power Supply module is used to provide additional power. When a MAQ20 I/O module is inserted into a system, module registration occurs automatically, data acquisition starts, and data is stored locally in the module. The system is based on a Modbus compatible memory map for easy access to acquired data, configuration settings, and alarm limits. Information is stored in consistent locations in module memory for ease of use and system design.

MAQ20 modules are designed for installation in Class I, Division 2 hazardous locations and have a high level of immunity to environmental noise commonly present in heavy industrial environments.

The MAQ20-ISOMV, MAQ20-ISOV voltage input modules and MAQ20-ISOI current input module offer 8 input channels that are isolated channel-to-channel to 300Vrms continuous. Signal bandwidth is 5kHz for voltage input and 1.5kHz for current input. All channels are individually configurable for range, alarm limits, and averaging to match the most demanding applications. High, Low, High-High and Low-Low alarms provide essential monitoring and warning functions to ensure optimum process flow and fail-safe applications. A burst scan mode allows up to 10kS/s per channel to be captured simultaneously. Field I/O connections are made through a pluggable terminal block with 4 positions provided for the termination of wiring shields.

Input-to-Bus isolation is a robust 1500Vrms and each individual channel is protected up to 240Vrms continuous overload in the case of inadvertent wiring errors. Overloaded channels do not adversely affect other channels in the module which preserves data integrity.

For details on hardware installation, configuration, and system operation, refer to the manuals and software available for download from [www.dataforth.com/maq20\\_download.aspx](http://www.dataforth.com/maq20_download.aspx) This includes, but is not limited to:

<a href="#">MA1036</a>	MAQ20 Quick Start Guide
<a href="#">MA1040</a>	MAQ20 Communications Module Hardware User Manual
<a href="#">MA1041</a>	MAQ20 milliVolt, Volt and Current Input Module Hardware User Manual
<a href="#">MA1038</a>	MAQ20 ReDAQ Shape for MAQ20 User Manual
<a href="#">MA1064</a>	MAQ20 API User Manual
<a href="#">MAQ20-940/-941</a>	ReDAQ Shape Software for MAQ20 – Developer Version/User Version
<a href="#">MAQ20-951/952</a>	IPEMotion Software for MAQ20
<a href="#">MAQ20-960</a>	MAQ20 API (Python)

### 3.0 Unpacking

Each MAQ20 Data Acquisition System component is shipped in electro-static discharge (ESD) protective packaging. Use appropriate ESD protection measures while unpacking. Check visually for physical damage. If physical damage is noted, file a claim with the shipping carrier and contact the factory.

### 4.0 Module Dimensions and Input Connections

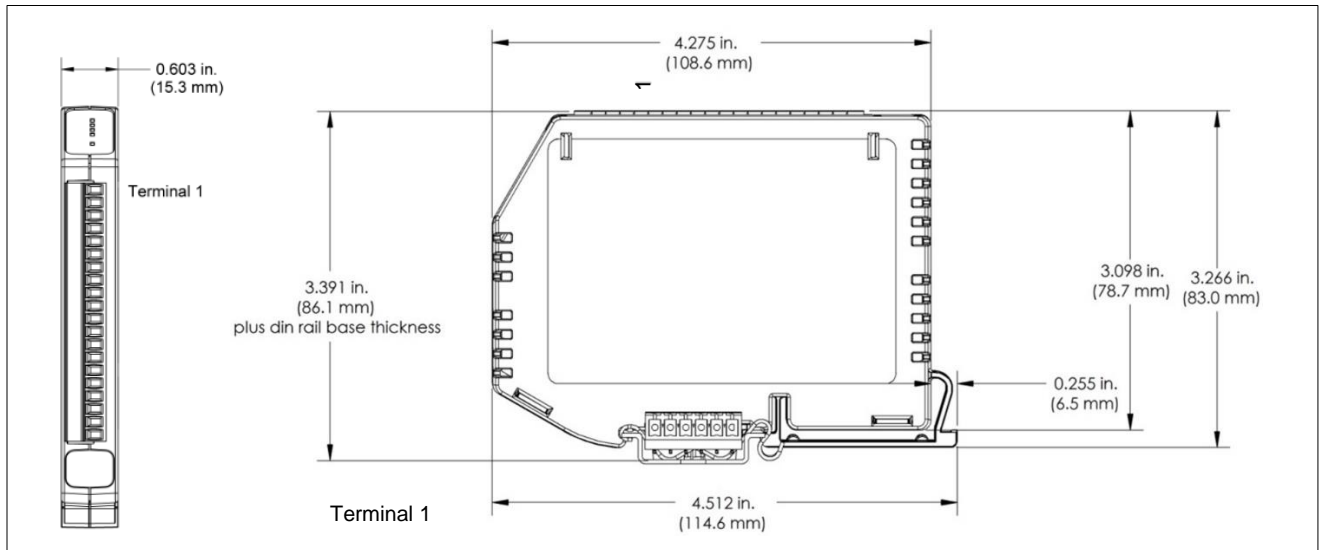


Figure 1: Module Dimensions

Table 1: Millivolt, Volt & Milliamp Input Module Input Terminal Block Connections

TERMINAL BLOCK POSITION (TOP TO BOTTOM)	MAQ20-ISOMV INPUT CONNECTIONS	MAQ20-ISOV INPUT CONNECTIONS	MAQ20-ISOI INPUT CONNECTIONS
1	CH0 +IN	CH0 +IN	CH0 +IN
2	CH0 -IN	CH0 -IN	CH0 -IN
3	SHIELD	SHIELD	SHIELD
4	CH1 +IN	CH1 +IN	CH1 +IN
5	CH1 -IN	CH1 -IN	CH1 -IN
6	CH2 +IN	CH2 +IN	CH2 +IN
7	CH2 -IN	CH2 -IN	CH2 -IN
8	SHIELD	SHIELD	SHIELD
9	CH3 +IN	CH3 +IN	CH3 +IN
10	CH3 -IN	CH3 -IN	CH3 -IN
11	CH4 +IN	CH4 +IN	CH4 +IN
12	CH4 -IN	CH4 -IN	CH4 -IN
13	SHIELD	SHIELD	SHIELD
14	CH5 +IN	CH5 +IN	CH5 +IN
15	CH5 -IN	CH5 -IN	CH5 -IN
16	CH6 +IN	CH6 +IN	CH6 +IN
17	CH6 -IN	CH6 -IN	CH6 -IN
18	SHIELD	SHIELD	SHIELD
19	CH7 +IN	CH7 +IN	CH7 +IN
20	CH7 -IN	CH7 -IN	CH7 -IN

The shield terminals are connected to the Field Side common and are isolated from the Bus. If shield drain to system ground is required this connection must be made external to the module.

The terminal blocks can accept the following wire sizes:

Solid Wire	AWG 16 to AWG 26
Stranded Wire	AWG 16 to AWG 26



## 5.0 Installation

The MAQ20 I/O module package has been designed for easy insertion into and removal from a system and can mate with DIN rails mounted flush on continuous panels or plates.

To install a module:

1. Orient the module with the field connector facing out.
2. Align the angled surface on the top rear corner with panel or plate the DIN rail is mounted to.
3. Slide the module down to capture the DIN rail with the hook on the module.
4. Rotate the module and snap in place.

To remove a module, reverse the steps in the installation process. If space is available, the clip at the bottom of the module can be squeezed by hand to release. For tight installations, insert a flat blade screwdriver into the recess in the clip (5), place the shaft of the screwdriver against the curved part of the clip and gently pry the clip to release (6) as shown in Figure 2 below.

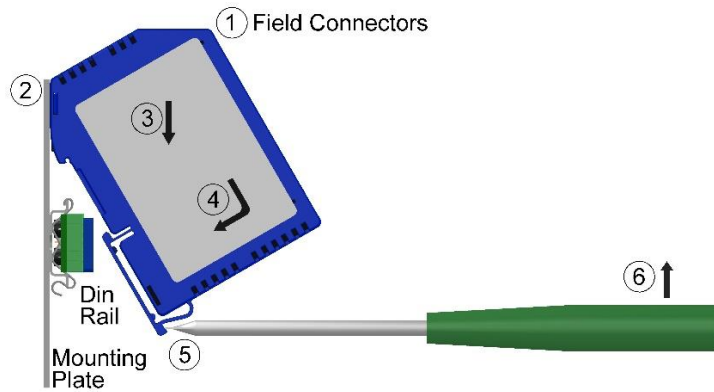


Figure 2: Installation and Removal

Multiple rows of MAQ20 modules can be mounted at a 3U vertical spacing interval. Backbones can be combined to add I/O modules to a system. A system is only allowed to have one MAQ20-COMx module. Some possible configurations in a 19" rack are shown in Figure 3 below.

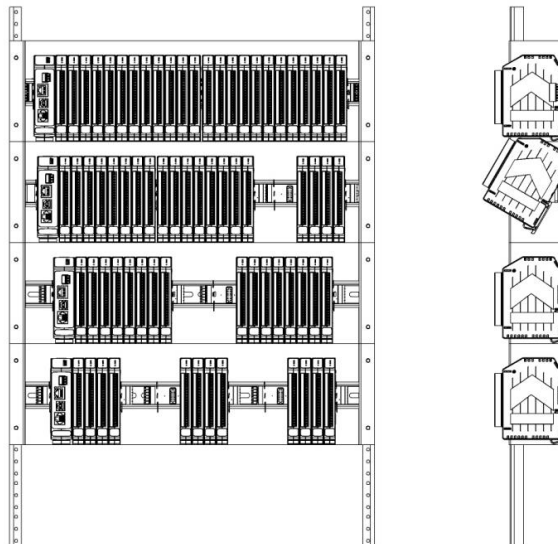


Figure 3: Possible System Configurations

## 6.0 Building a System

An automated I/O module registration process reduces system setup to three basic steps:

### STANDARD SETUP PROCESS

- 1.) Install a MAQ20-BKPLx backbone in a DIN rail then insert a MAQ20-COMx module in the left-most position and apply power.
- 2.) Install any MAQ20 I/O Module in any vacant local or remote backbone position. Observe that the green Power LED is on and communications activity is seen on the TX and RX LEDs. Allow 1 second for registration. This module has now been assigned Registration Number 1.

Label and connect field wiring to the I/O Module. If desired, record module physical position in the system.

- 3.) Repeat Step 2 for all remaining MAQ20 I/O modules in the system. Subsequent modules installed are assigned Registration Number 2, 3, etc. The Registration Number sequence matches the physical sequence of module installation.

### ALTERNATE SETUP PROCESS

- 1.) Do not apply power. Install a MAQ20-BKPLx backbone in a DIN rail then insert a MAQ20-COMx module in the left-most position and install all required MAQ20 I/O modules in any vacant local or remote backbone position. Label and connect field wiring to the I/O Module and if desired record physical position in the system.
- 2.) Apply system power and observe that each module has the green Power LED on and communications activity is seen on the TX and RX LEDs. Allow 5 seconds for full system registration. All modules have now been assigned Registration Numbers, but in a random sequence not associated with the physical position on the backbone.

### NOTES:

Once the registration process is complete, Registration Numbers are permanent as long as I/O modules are not removed from or added to a system. When system power is cycled or the system is reset, I/O module Registration Numbers will always remain the same. If I/O modules are removed while the system is powered, they will be unregistered and the slots or registration numbers become available to register modules once inserted. If I/O modules are removed while the system is powered and then the power is cycled, the remaining modules will remain registered with their assigned Registration Numbers.

I/O modules in a system are identified in general by their model number (MAQ20-VDN, MAQ20-JTC, etc.) and uniquely by their Serial Number printed on the side label (i.e. 1234567-89). When I/O modules are installed in the system, only a general identifier is visible on the front of the module (V, I, TC, etc.). Wire tags or additional labeling applied to the module terminal block may be used for visible unique identification in an installed system.

MAQ20-940 ReDAQ Shape Software for MAQ20 automatically assigns tag names to each input and output channel. These can be changed by the customer to associate channels with input wiring or parameters measured and controlled.

The system does not identify I/O modules by physical position on a backbone, only by registration sequence. MAQ20-940 ReDAQ Shape Software for MAQ20 provided by Dataforth shows a graphical representation of a system based on registration sequence and not by physical position. Tools within the software package allow the user to reassign Registration Numbers thereby making graphical representations match physical location for a single, local backbone. For further details, see [Section 9.0](#).

Module Detect: A write to the Module Detect Register at I/O module address 98 plus the module offset based on Registration Number will blink the STAT LED on the top angled surface of the module at a 5Hz rate for 5 seconds so the module location in a system can be visually identified.

## 7.0 Maintaining a System

The MAQ20-COMx Communications Module periodically scans the system and will detect if a MAQ20 I/O module has been removed from the system or has lost communications. When this happens the module Registration Number will be released and available for reassignment.

Standard system maintenance involves a simple three step process:

### STANDARD MAINTENANCE PROCESS

- 1.) Turn system power on and observe communications activity on the I/O modules.
- 2.) CASE 1: I/O module is replaced with one having a different model number or serial number

Remove a single MAQ20 I/O module from any local or remote backbone position. Replace the module with another having a different model number. This module can be installed in any vacant local or remote backbone position. Observe that the green Power LED is on and that there is communications activity on the TX and RX LEDs. Allow 1 second for registration. This module now has the same Registration Number as the one removed.

#### CASE 2: I/O module is suspected faulty and is to be replaced with the same model number

Remove a single MAQ20 I/O module from any local or remote backbone position. Replace the module with another of the same model number. This module can be installed in any vacant local or remote backbone position. Observe that the green Power LED is on and communications activity is seen on the TX and RX LEDs. Allow 1 second for registration. This module now has the same Registration Number as the one removed.

Label and connect input/output wiring to the I/O module and if desired record physical position in the system.

- 3.) Repeat Step 2 for any remaining MAQ20 I/O modules in the system requiring maintenance.

### ALTERNATE MAINTENANCE PROCESS

- 1.) With system power off, remove any I/O modules which are to be replaced. Replace the modules with others of the same or different model numbers. Modules can be installed in any vacant local or remote backbone position.

Label and connect input/output wiring to the I/O module and if desired record physical position in the system.

- 2.) Apply system power and observe that each module has the green Power LED on and communications activity is seen on the TX and RX LEDs. Allow 5 seconds for full system registration. Replaced modules have now been assigned the Registration Numbers of those removed, but in a random sequence not associated with the physical position on the backbone. Modules which were not replaced retain their assigned Registration Numbers.

### NOTES:

Once the registration process is complete, Registration Numbers are permanent as long as I/O modules are not removed from or added to a system. When system power is cycled or the system is reset, I/O module Registration Numbers will always remain the same. Tools within MAQ20-940 ReDAQ Shape Software for MAQ20 allow the user to reassign Registration Numbers. For further details, see [Section 9.0](#).

Module Detect: A write to the Module Detect Register at I/O module address 98 plus the module offset based on Registration Number will blink the STAT LED on the top angled surface of the module at a 5Hz rate for 5 seconds so the module location in a system can be visually identified.

## 8.0 Expanding a System

The MAQ20-COMx Communications Module periodically scans the system and will detect if a MAQ20 I/O module has been added. When this happens the next available sequential Registration Number is assigned to the module.

Standard system expansion involves a simple three step process:

### STANDARD EXPANSION PROCESS

- 1.) Turn system power on and observe communications activity on the I/O modules.
- 2.) Add a single MAQ20 I/O module in any local or remote backbone position. Observe that the green Power LED is on and communications activity is seen on the TX and RX LEDs. Allow 1 second for registration. This module has now been assigned the next available sequential Registration Number.

Label and connect input/output wiring to the I/O module and if desired record physical position in the system.

- 3.) Repeat Step 2 for all remaining MAQ20 I/O modules to be added to the system. Subsequent modules installed are assigned the next sequential Registration Number.

### ALTERNATE EXPANSION PROCESS

- 1.) With system power off, install all additional MAQ20 I/O modules in any vacant local or remote backbone positions. Label and connect field wiring to the I/O module and if desired record physical position in the system. Do not apply power.
- 2.) Apply system power and observe that each module has the green Power LED on and communications activity is seen on the TX and RX LEDs. Allow 5 seconds for full system registration. Added modules have now been assigned the next available sequential Registration Numbers, but in a random sequence not associated with the physical position on the backbone. Modules previously installed and registered in the system retain their assigned Registration Numbers.

### NOTES:

Once the registration process is complete Registration Numbers are permanent as long as I/O modules are not removed from or added to a system. When system power is cycled or the system is reset, I/O module Registration Numbers will always remain the same. If I/O modules are removed while the system is powered, they will be unregistered and the slots or registration numbers become available to register modules once inserted. If I/O modules are removed while the system is powered and then the power is cycled, the remaining modules will remain registered with their assigned Registration Numbers. Tools within MAQ20-940 ReDAQ Shape Software for MAQ20 allow the user to reassign Registration Numbers. For further details, see [Section 9.0](#).

Module Detect: A write to the Module Detect Register at I/O module address 98 plus the module offset based on Registration Number will blink the STAT LED on the top angled surface of the module at a 5Hz rate for 5 seconds so the module location in a system can be visually identified.

## 9.0 MAQ20 I/O Module Registration

The MAQ20 Data Acquisition System uses an automated registration process which periodically scans the system and will detect when MAQ20 I/O modules are added and removed. Modules are assigned a sequential Registration Number based on the order in which they are detected. This order can be forced to occur in a given sequence by adding modules one at a time or it can be allowed to happen randomly. For further details, see [Section 6.0](#), [Section 7.0](#), and [Section 8.0](#).

The system does not identify I/O modules by physical position on a backbone, only by registration sequence. MAQ20-940 ReDAQ Shape Software for MAQ20 provided by Dataforth shows a graphical representation of a system based on registration sequence and not by physical position. Tools within the software package allow the user to reassign Registration Numbers thereby making graphical representations match physical location for a single, local backbone.

Module Detect: A write to the Module Detect Register at I/O module address 98 plus the module offset based on Registration Number will blink the STAT LED on the top angled surface of the module at a 5Hz rate for 5 seconds so the module location in a system can be visually identified.

Each module is assigned an address space of 2000 addresses based on the Registration Number and starting at address 2000. I/O module with Registration Number 1 is assigned address space 2000 – 3999, I/O module with Registration Number 2 is assigned address space 4000 – 5999 and so on. The starting address for the module is very important because this is the offset address that must be added to the addresses listed in the I/O module address map to know where data for that module is located within the system level address map. The MAQ20-COMx Communication Module is always assigned a Registration Number of 0.

The automated registration process can be disabled and I/O modules can be registered using a manual process if required by an application. Refer to [MA1040](#) MAQ20 Communications Module Hardware User Manual for details.

The standard mode of operation is called Continuous Scan Mode. All channels are enabled and input readings are taken by sending a read request command to the module. In Burst Scan Mode, channels can be selectively enabled.

The [MAQ20-ISOMV, MAQ20-ISOV & MAQ20-ISOI Address Map](#) is found at the end of this manual. An excerpt from the Address Map is shown below. Channel Data is stored starting at address 1000.

NOTE: When a module is registered in a system, addresses are offset by  $2000 * R$ , where R is the Registration Number. Refer to [Section 9.0](#) for further details on Registration Number.

Address Range 1000 - 1699 : Module Data						
Start Address	Read/Write	Number of Registers	Contents	Description	Data Range	Data type
1000	R	16	Channel Data	Data for all 8 Channels	See Table 4	INT16

*Example:* A MAQ20-ISOV2 module with serial number 1234567-89 is installed in a system and has been assigned a Registration Number of 6. Read Current Data from Channels 0-7.

The MAQ20-ISOV2 module with s/n 1234567-89 has an address offset of  $2000 * 6 = 12000$

Read from register addresses  $12000 + 1000$  to  $1007 = 12000$  to  $12007$  the Current Data from Channels 0-7.

The MAQ20-940 ReDAQ Shape Software for MAQ20 has a utility which allows the user to reassign Registration Numbers to I/O Modules in a system. This can be used to rearrange the way I/O modules are displayed in the software if the Alternate Registration Processes have been used instead of the Standard Registration Processes. These are described in [Section 6.0](#), [Section 7.0](#) and [Section 8.0](#).

ReDAQ Shape Software for MAQ20 presents a graphical representation of the system on the Acquire panel as shown in Figure 4. I/O modules are displayed sequentially left to right in the order they were registered. The display does not represent physical position and will not show physical vacant positions between I/O modules. The system graphic shows a 24 position backbone regardless of the backbone or combination of backbones used in a system.

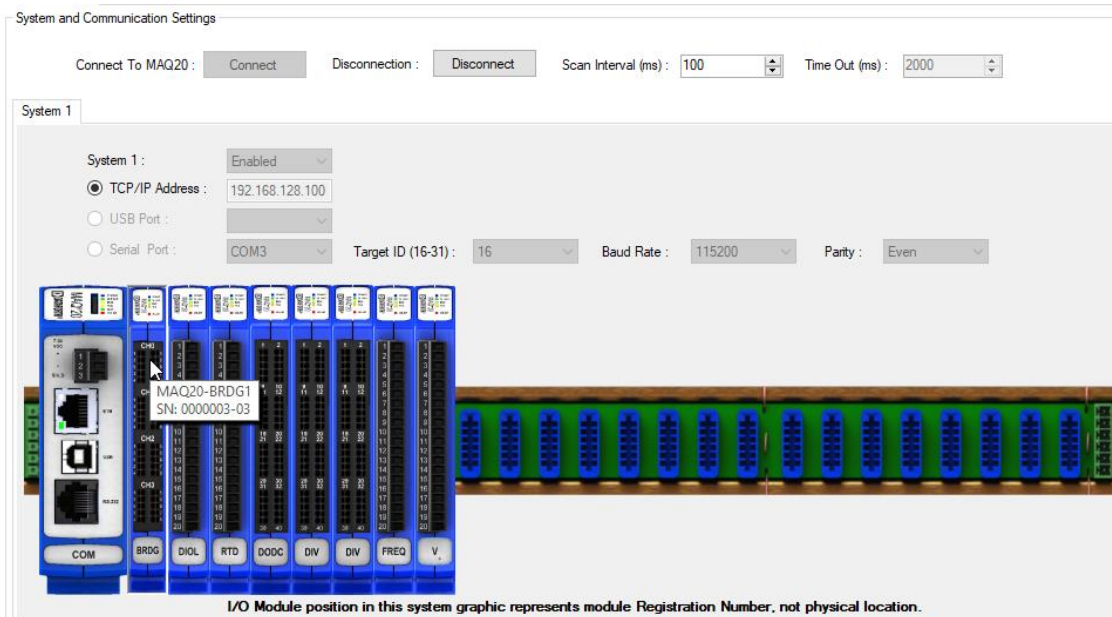


Figure 4: MAQ20-940 ReDAQ Shape for MAQ20 Main Configuration Screen

To view the registration sequence, double-click on the MAQ20-COMx graphic to obtain the system panel shown in Figure 5.

MAQ20-COMx

Device: MAQ20-COM2, Serial Number: 0098682-23, Date Code: D0116, Firmware version: F1.33, Temperature: 54°C

Return

System Summary Setup COM SD Memory Card Data Converter

Up Down Save

Registration #	Start Address	Model Number	Serial Number	Date Code	Firmware	Inputs	Outputs
1	2000	MAQ20-BRDG1	0000003-03	D0813	F1.46	8	0
2	4000	MAQ20-DIOL	0104527-01	D0415	F1.12	5	5
3	6000	MAQ20-RTD31	0103323-12	D0415	F2.15	6	0
4	8000	MAQ20-DODC20SK	0104672-05	D0317	F1.02	0	20
5	10000	MAQ20-DIV20	0101471-03	D0617	F1.02	20	0
6	12000	MAQ20-DIVC20	0101474-03	D0317	F1.02	20	0
7	14000	MAQ20-FREQ	0110509-08	D0217	F1.20	8	4
8	16000	MAQ20-VDN	0107000-03	D0116	F2.62	8	0
9							
10							
11							
12							
13							
14							
15							
16							

Figure 5: Module Registration using MAQ20-940 ReDAQ Shape for MAQ20

Registration Numbers are listed in the left column. The column title Slot Number is the same as the Registration Number and refers to the position where the software has registered the I/O module. Slot Number or Registration Number will not necessarily be the same as the physical position of the module in the system. To change the Registration Number of an I/O module, click the box in the left column next to the Registration Number, then use the Up and Down buttons to move the module within the sequence. The system automatically reassigns the I/O modules above and below the one moved. Repeat for other modules if desired. The MAQ20-COMx module always has Registration Number 0 and cannot be moved. Press 'Save' to save the new configuration. The new registration sequence is permanent as long as I/O modules are not removed from or added to a system.



## 10.0 Range Selection, Channel Enable & Reading Signals

The MAQ20-ISOMV, MAQ20-ISOV and MAQ20-ISI modules have two user selectable input ranges. Input ranges are selectable on a per-channel basis. Over-range and Under-range up to 10% beyond the standard input values will be measured. The published accuracy is guaranteed over the standard input ranges. The [Range Table following the Address Map](#) for each module at the end of this manual shows the input ranges for each module and the input to counts mapping. The Range Table for the MAQ20-ISOV2 module is shown below for reference.

	Range	Standard Input Voltage	Equivalent Counts	Over/Under Range	Equivalent Counts	Volts per Count
MAQ20-ISOV2	0	-10V to +10V	-28671 to 28671	-11V to +11V	-31538 to 31538	$3.489 \times 10^{-6}$
	1	0V to +10V	0 to 28671	-1V to +11V	-2867 to 31538	$3.489 \times 10^{-6}$

The [MAQ20-ISOMV, MAQ20-ISOV & MAQ20-ISOI Address Map](#) is found at the end of this manual. An excerpt from the Address Map is shown below. Input Range is stored starting at address 100 and Channel Data is stored starting at address 1000.

NOTE: When a module is registered in a system, addresses are offset by  $2000 * R$ , where R is the Registration Number. Refer to [Section 9.0](#) for further details on Registration Number.

Address Range 100 - 699 : Module Configuration						
Start Address	Read/Write	Number of Registers	Contents	Description	Data Range	Data type
100	R/W	8	Input Range	Range for each of 8 channels	See Table 4	INT16

Address Range 1000 - 1699 : Module Data						
Start Address	Read/Write	Number of Registers	Contents	Description	Data Range	Data type
1000	R	8	Channel Data	Data for each of 8 Channels	-4096 to 4095	INT16

To change the input range, write the appropriate range code to address  $100 + 2000 * R$ .

Once a range selection is made it can be saved to EEPROM. Standard Reset does not affect the setting in volatile memory. Reset-to-Default will clear the setting in volatile memory and reset the ranges to the default values. Settings stored to EEPROM are not affected by Standard Reset or Reset-to-Default. Module power cycle will restore range settings from EEPROM.



*Example:* A MAQ20-ISOV2 module with serial number 1234567-89 is installed in a system and has been assigned a Registration Number of 2. Set channels 0 and 1 to measure  $\pm 10V$ , channels 4 and 5 to measure 0 to +10V. Obtain the current readings in counts and convert these to Engineering units.

The MAQ20-ISOV2 module with s/n 1234567-89 has an address offset of  $2000 * 2 = 4000$

The default module configuration is all channels enabled and all channels with range -10V to +10V. The table shows that Range 0 is -10V to +10V in and Range 1 is 0V to +10V in. Range information is also stored in registers at addresses 1700 – 1800 for user read back if desired.

Write to register address  $4000 + 100 = 4100$  a data value of 0 to set Ch 0 input range to  $\pm 10V$   
 Write to register address  $4000 + 101 = 4101$  a data value of 0 to set Ch 1 input range to  $\pm 10V$   
 Write to register address  $4000 + 104 = 4104$  a data value of 1 to set Ch 4 input range to 0V to +10V  
 Write to register address  $4000 + 105 = 4105$  a data value of 1 to set Ch 5 input range to 0V to +10V

Read from register address  $4000 + 1000 = 5000$  the data from Channel 0  
 Read from register address  $4000 + 1001 = 5001$  the data from Channel 1  
 Read from register address  $4000 + 1004 = 5004$  the data from Channel 4  
 Read from register address  $4000 + 1005 = 5005$  the data from Channel 5

If the data read from Channel 0 is -14336 counts and the data read from Channel 4 is 21503 counts, the input signals are:

Ch 0:  $-14336 \text{ counts} * (11V - -11V) / (31538 \text{ counts} - -31538 \text{ counts}) = -5.000V$   
 Ch 4:  $21503 \text{ counts} * (11V - 1V) / (31538 \text{ counts} - -2867 \text{ counts}) = 2.500V$

## 11.0 Alarm Functions

The powerful alarm functions in the MAQ20 Data Acquisition System provide essential monitoring and warnings to ensure optimum process flow and fail-safe applications. Alarms have the following parameters which can be configured:

### Alarm Enable

Enables the Alarm on a given channel provided that the Alarm Configuration Register has a valid configuration. Set the bit corresponding to the given channel to a 1 to enable the alarm. If the Alarm Configuration register for the given channel does not have a valid value, the write will be ignored and the Alarm Enable bit will remain 0. Write a 0 to the bit corresponding to the given channel to disable the alarm and clear any alarms that have tripped.

### Alarm Configuration

Selects Tracking or Latching alarms for a given channel and selects which limits trip the alarm - High, Low, High-High or Low-Low. There is a register for each channel. The value written to this register is the sum of the codes for the Alarm Type and Alarm Limits. Reference Section 12.0 for the specific codes. If an invalid value is written to this register, the value will be ignored and the last valid value that the register contained will be kept. If a 0 is written to the register, the Alarm Enable register for the channel will be set to 0 and alarms that the channel has tripped will be cleared.

Tracking alarms follow the value of the input signal and reset automatically when the signal comes back into the valid range specified by the limit and deadband. Latching alarms trip when the signal exceeds the alarm condition and remain set until reset by the user.

### High Limit

Sets the value for the High limit in counts. Alarm status is stored in a register.

### Low Limit

Sets the value for the Low limit in counts. Alarm status is stored in a register.

### High Low Deadband

Used for the High and/or Low limits to prevent false tripping or alarm chatter for noisy signals. Deadband is the region less than the High limit or greater than the Low limit, measured in counts, which the signal must traverse through before the alarm is reset after being tripped.

### High-High Limit

Sets the value for the High-High limit in counts. Alarm status is stored in a register.

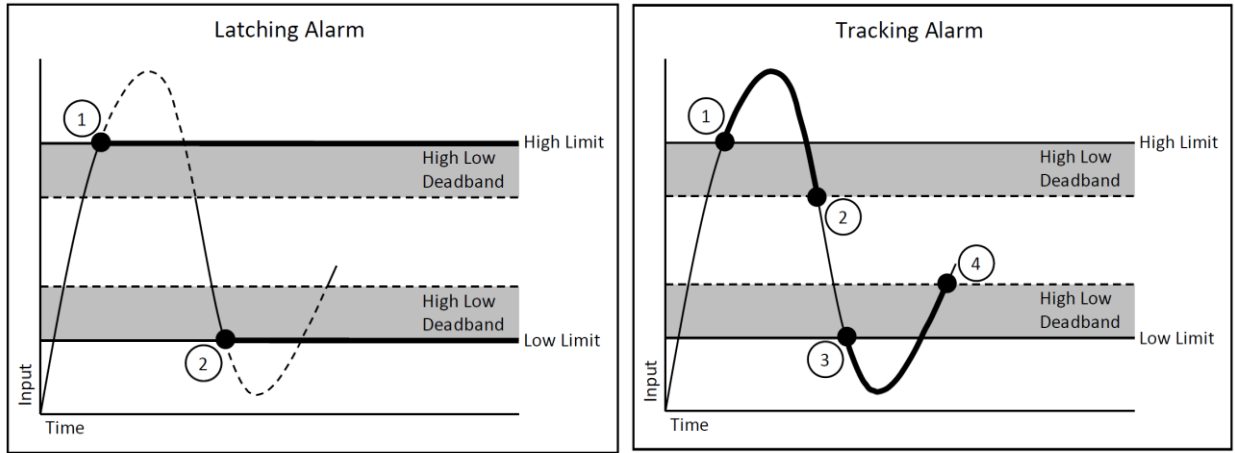
### Low-Low Limit

Sets the value for the Low-Low limit in counts. Alarm status is stored in a register.

### High-High Low-Low Deadband

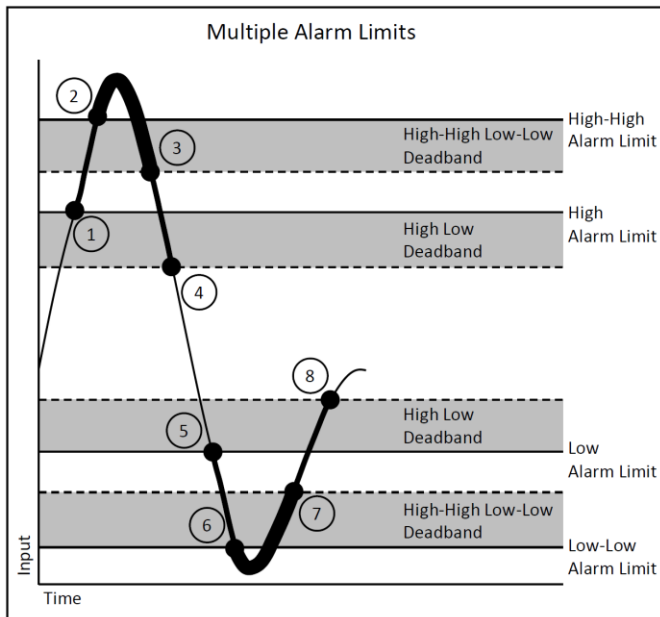
Used for the High-High and/or Low-Low limits to prevent false tripping or alarm chatter for noisy signals. Deadband is the region less than the High-High limit or greater than the Low-Low limit, measured in counts, which the signal must traverse through before the alarm is reset after being tripped.

See Figure 6 below for graphical representations of alarm parameters and functionality.

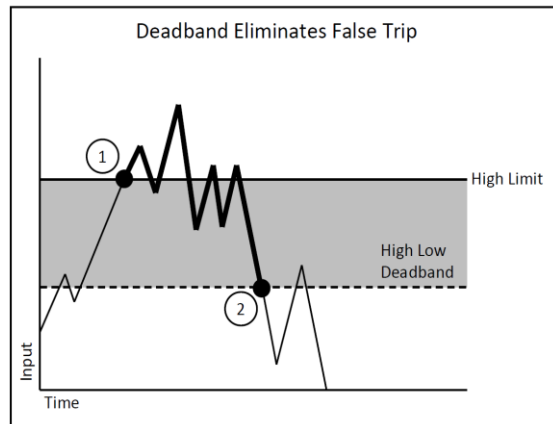


1. High Alarm Tripped
2. Low Alarm Tripped

1. High Alarm Tripped
2. High Alarm Reset
3. Low Alarm Tripped
4. Low Alarm Reset



1. High Alarm Trip
2. High-High Alarm Trip
3. High-High Alarm Reset
4. High Alarm Reset
5. Low Alarm trip
6. Low-Low Alarm Trip
7. Low-Low Alarm Reset
8. Low Alarm Reset



1. High Alarm Trip
2. High Alarm Reset

Figure 6: Alarm Parameters and Functionality

## 12.0 Setting and Monitoring Alarms

The [MAQ20-ISOMV, MAQ20-ISOV & MAQ20-ISOI Address Map](#) is found at the end of this manual. An excerpt from the Address Map is shown below. Alarm parameters are stored in registers at addresses 700 – 999.

NOTE: When a module is registered in a system, addresses are offset by  $2000 * R$ , where R is the Registration Number. Refer to [Section 9.0](#) for further details on Registration Number.

Address Range 700 - 999 : Alarm Configuration						
Start Address	Read/Write	Number of Registers	Contents	Description	Data Range	Data type
700	R/W	1	Alarm Status, Low-Low	Write 0 to the corresponding channel bit to clear a Latched Alarm	0 to 65,535	INT16
701	R/W	1	Alarm Status, Low	Write 0 to the corresponding channel bit to clear a Latched Alarm	0 to 65,535	INT16
702	R/W	1	Alarm Status, High	Write 0 to the corresponding channel bit to clear a Latched Alarm	0 to 65,535	INT16
703	R/W	1	Alarm Status, High-High	Write 0 to the corresponding channel bit to clear a Latched Alarm	0 to 65,535	INT16
704	R/W	1	Alarm Enable	1 = Enabled 0 = Disabled	See below	INT16
710	R/W	8	Alarm Configuration	Alarm Configuration	See below	INT16
730	R/W	8	High Limit	High Alarm Limit	See Table 4	INT16
750	R/W	8	Low Limit	Low Alarm Limit	See Table 4	INT16
770	R/W	8	High Low Deadband	Deadband for High Low Alarm	See Table 4	INT16
790	R/W	8	High-High Limit	High-High Alarm Limit	See Table 4	INT16
810	R/W	8	Low-Low Limit	Low-Low Alarm Limit	See Table 4	INT16
830	R/W	8	High-High Low-Low Deadband	Deadband for High-High Low-Low Alarm	See Table 4	INT16

Alarms are configured by writing a code to the register at address  $710 + 2000 * R$  and then enabled and disabled by writing a 1 or 0 to the register at address  $704 + 2000 * R$ . Alarm Status is stored in registers at address range 700 – 703, offset by  $2000 * R$ . The code written to address  $710 + 2000 * R$  is the sum of a number representing the type of alarm and a number representing the alarm limits to be monitored.

**Alarm Configuration Value = Alarm Type Code + Alarm Limit Code**

<b>Alarm Type</b>	<b>Code</b>	<b>Alarm Limit</b>	<b>Code</b>
Tracking	1000	Low Limit	100
Latching	2000	High Limit	200
		High/Low Limit	300
		Low-Low Limit	400
		High/High Limit	500
		All Limits	600

If the Alarm Configuration Value = 0, the Alarm is Off (Disabled). The Alarm for a given channel cannot be turned On (Enabled) until a valid, non-zero value is written to the Alarm Configuration register.

*Example:* A MAQ20-ISOV2 module with serial number 1234567-89 is installed in a system and has been assigned a Registration Number of 3. Set up the module to have a Tracking Alarm on Channel 1 with a High limit of 3000 counts, a Low limit of 500 counts and a Deadband of 100 counts.

The MAQ20-ISOV2 module with s/n 1234567-89 has an address offset of  $2000 * 3 = 6000$

Write to register address  $6000 + 711 = 6711$  a value of  $1000 + 300 = 1300$  to set a Tracking Alarm with High Low limit

Write to register address  $6000 + 731 = 6731$  a data value of 3000 to set the High limit

Write to register address  $6000 + 751 = 6751$  a data value of 500 to set the Low limit

Write to register address  $6000 + 771 = 6771$  a data value of 100 to set the Deadband for the High and Low limits

Write to register address  $6000 + 704 = 6704$  the equivalent of bit code 0000 0010 = 3 to enable Channel 1

When an alarm condition is reached as specified by the above parameters, the Alarm Status registers are written in response to the events and the red LED on the module is lit.

Read register address  $6000 + 702 = 6702$  to view the status of the Low Alarm.

If bit code 0000 0010 = 3 is read, a Low Alarm has occurred on Channel 1.

Read register address  $6000 + 703 = 6703$  to view the status of the High Alarm

### 13.0 Signal Averaging

Signal averaging can be set on a per-channel basis by configuring the Average Weight. Average Weight is calculated as  $2^x$  where  $x = 0$  to 15 and the default value is  $x = 0$ . The running average is then calculated as follows:

$$\text{Average} = \text{Average} + ((\text{Sampled Value} - \text{Average}) / \text{Average Weight})$$

The [MAQ20-ISOMV, MAQ20-ISOV & MAQ20-ISOI Address Map](#) is found at the end of this manual. An excerpt from the Address Map is shown below. Signal averaging parameters are stored in registers at addresses 120 – 127.

NOTE: When a module is registered in a system, addresses are offset by  $2000 * R$ , where R is the Registration Number. Refer to [Section 9.0](#) for further details on Registration Number.

Address Range 100 - 699 : Module Configuration						
Start Address	Read/Write	Number of Registers	Contents	Description	Data Range	Data type
120	R/W	8	Average Weight	Weight for Average Calculation	0 to 15	INT16

Address Range 1000 - 1699 : Module Data						
Start Address	Read/Write	Number of Registers	Contents	Description	Data Range	Data type
1000	R	8	Channel Data	Data for all 8 Channels	See Table 4	INT16
1016	R	1	Alarm Status	Status of Low-Low Alarm	0 to 65,535	INT16
1017	R	1	Alarm Status	Status of Low Alarm	0 to 65,535	INT16
1018	R	1	Alarm Status	Status of High Alarm	0 to 65,535	INT16
1019	R	1	Alarm Status	Status of High-High Alarm	0 to 65,535	INT16
1030	R/W	8	Data Minimum	Minimum for each of 8 Channels	See Table 4	INT16
1050	R/W	8	Data Maximum	Maximum for each of 8 Channels	See Table 4	INT16
1070	R/W	8	Data Average	Average for each of 8 Channels	See Table 4	INT16
1090	R	8	Channel 0 Data	Last 8 readings for Channel 0	See Table 4	INT16
1100	R	8	Channel 1 Data	Last 8 readings for Channel 1	See Table 4	INT16
1110	R	8	Channel 2 Data	Last 8 readings for Channel 2	See Table 4	INT16
1120	R	8	Channel 3 Data	Last 8 readings for Channel 3	See Table 4	INT16
1130	R	8	Channel 4 Data	Last 8 readings for Channel 4	See Table 4	INT16
1140	R	8	Channel 5 Data	Last 8 readings for Channel 5	See Table 4	INT16
1150	R	8	Channel 6 Data	Last 8 readings for Channel 6	See Table 4	INT16
1160	R	8	Channel 7 Data	Last 8 readings for Channel 7	See Table 4	INT16

*Example:* A MAQ20-ISOV2 module with serial number 1234567-89 is installed in a system and has been assigned a Registration Number of 4. Set the Average Weight of Channel 4 to 8, then read the following parameters for Channel 4: Current Data, Min Data, Max Data, Average Data and the last 8 readings.

The MAQ20-ISOV2 module with s/n 1234567-89 has an address offset of  $2000 * 4 = 8000$

Write to register address  $8000 + 124 = 8124$  a data value of 8 to set the Average Weight

Read from register address  $8000 + 1034 = 9034$  the min data from Channel 4

Read from register address  $8000 + 1054 = 9054$  the max data from Channel 4

Read from register address  $8000 + 1074 = 9074$  the average data from Channel 4 with weight 8

Read from register address  $8000 + 1130$  to  $1138 = 9130 - 9138$  the last 8 readings from Channel 4

## 14.0 Reset Functions

Two types of firmware reset are supported in the MAQ20 I/O modules:

*Standard Reset* is used to put the module in a user-defined state. The parameters listed below will be set to the last state saved to EEPROM. Parameters stored in EEPROM are not affected.

*Reset-to-Default* reverts the module to the settings used at the factory during manufacture. It performs the standard reset actions plus resets most non-volatile parameters to default settings. Parameters stored in EEPROM are not affected.

The table below shows what parameters are affected for each reset.

Table 2: Parameters Affected by Standard Reset and Reset-to-Default

RESET TYPE	PARAMETERS
Standard Reset	Disables all Alarms Resets Min, Max and Average registers to 0 Clears all Status and Diagnostic registers
Reset-to-Default	All parameters listed under Standard Reset, plus: Clears all Alarm Limits and Deadbands

### Reset Registers

Writing a valid data value to the Reset Register will force the module to perform a specified reset. Write 0 to perform Standard Reset and write 255 to perform Reset-to-Default.

NOTE: The MAQ20 I/O modules send a response to the reset register write before carrying out the reset. This means the module will be unresponsive to commands for approximately 3 seconds.

### Power-On-Reset (POR) and Brownout

MAQ20 I/O modules utilize a brown-out detect circuit and watchdog timer to ensure reliable and predictable operation under all conditions. Upon power cycle, brown-out detect or any extreme circumstance under which the watchdog timer expires, a Standard Reset is performed and parameters stored in EEPROM are loaded to the appropriate registers.

## 15.0 Module Identification and Status Registers

Module identification including model number, serial number, date code and firmware revision are stored in registers at addresses 0 – 41.

I/O modules in a system are identified in general by their model number (MAQ20-BRDG1, MAQ20-VDN, etc.) and uniquely by their Serial Number printed on the side label (1234567-89). When I/O modules are installed in the system, only a general identifier is visible on the front of the module (DIOH, V, etc.). Wire tags or additional labeling applied to the module terminal block may be used for visible unique identification in an installed system. Additionally, the system has a utility to provide a visual indication of module response for identification. Any write to address 98 plus the offset based on the Registration Number will blink the STATUS LED on the top angled surface of the module at a 5Hz rate for 5 seconds.

For troubleshooting purposes, reset status, communications errors, and invalid data written to a module are monitored and made available to the user. Diagnostic registers at addresses 1900 – 1910 hold this information.

## 16.0 LED Indicators

A set of 5 LEDs on the top panel of the MAQ20 I/O modules indicate module power, operation, communication and alarm status.



### LED Function and Troubleshooting Tips:

#### PWR

Normal operation: BLUE, solid lit

LED Off: Abnormal power situation

- Verify that a MAQ20-COMx is present in system
- Verify that the MAQ20-COMx module has 7-34VDC power connected and turned on
- Determine if the module is communicating by observing the TX and RX LEDs

#### STAT

Normal operation: GREEN, 1 Hz blinking



**Module Detect:** A write to the Module Detect Register will force this LED to blink at 5Hz rate for 5 seconds so the module location in a system can be visually identified. Referring to the Address Map, this register is at address 98 offset from the module base address.

**LED Constant On or Constant Off:** Abnormal operation

- Remove and reinstall module to force a reset
- Remove and reinstall module into another backbone position
- Determine if the module is communicating by observing the TX and RX LEDs

## **RX, TX**

**Normal Operation – YELLOW,** rapid blinking during communication with MAQ20-COMx module

**LED Constant Off:** Abnormal operation or no communications to MAQ20-COMx module

- Verify communications by sending a request for data. Note that the fast communications rate used on the system backbone will result in the LED appearing dim due to short blinking cycle
- Verify that the PWR and STAT LED indicate normal operation
- Verify that there is only one MAQ20-COMx module installed in the system

## **ALM**

**Normal operation:** Off

**Alarm Condition Detected:** RED, solid lit.

- One or more alarms have been tripped.
- Read Alarm Registers based on Alarm Configuration to determine system status

The following troubleshooting tips can be used to further diagnose and fix system problems:

- Remove and reinstall MAQ20 I/O module and/or MAQ20-COMx module to verify proper insertion into Backbone
- Remove and reinstall MAQ20 I/O module into another backbone position
- If a Backbone extension cable is used, ensure that the connections are made correctly

## 17.0 Specifications

### Specifications Typical\* at $T_a = +25^\circ\text{C}$ and +24VDC system power

Module	Description
MAQ20-ISOMV1 <sup>◇</sup> MAQ20-ISOV1 <sup>◇</sup> MAQ20-ISOV2 <sup>◇</sup> MAQ20-ISOI1 <sup>◇</sup>	0 to +100mV, $\pm 100\text{mV}$ (default) 0 to +1V, $\pm 1\text{V}$ (default) 0 to +10V, $\pm 10\text{V}$ (default) 0-20mA (default), 4-20mA, $\pm 20\text{mA}$
Per Channel Setup	Individually configurable for range, alarms, averaging, burst scan
Input Protection Continuous Transient CMV Channel-to-Bus Channel-to-Channel Transient CMR NMR	240Vrms max ANSI/IEEE C37.90.1  1500Vrms, 1 min 300Vrms, 425V peak ANSI/IEEE C37.90.1 100dB at 50/60Hz 20dB/decade
Accuracy <sup>(1)</sup> Linearity / Conformity Resolution Stability Zero Span	$\pm 0.035\%$ span $\pm 0.02\%$ span 0.0015% span  15ppm/ $^\circ\text{C}$ 35ppm/ $^\circ\text{C}$
Bandwidth Scan Rate Continuous Burst Alarms Open Input Response mV Input Detection Time Power Supply Current	5kHz Voltage Input, 1.5kHz Current Input  500 Ch/s net, 65 Ch/s at 8-Ch Simultaneous 10kS/s per channel High / High-High / Low / Low-Low  Upscale <5s 270mA
Dimensions (h)(w)(d)	3.27" x 4.51" x 0.60" (83.1mm x 114.6mm x 15.3mm)
Environmental Operating Temperature Storage Temperature Relative Humidity Emissions, EN61000-6-4 Radiated, Conducted Immunity EN61000-6-2 RF ESD, EFT	-40 $^\circ\text{C}$ to +85 $^\circ\text{C}$ -40 $^\circ\text{C}$ to +85 $^\circ\text{C}$ 0 to 95% Noncondensing ISM Group 1 Class A ISM Group 1 Performance A $\pm 0.5\%$ Span Error Performance B
Certifications	Heavy Industrial CE Compliant ATEX Compliance Pending UL/CUL Listing Pending (Class I, Division 2, Groups A, B, C, D)

NOTES:

\*Contact factory or your local Dataforth sales office for maximum values.

<sup>◇</sup> Preliminary at date of printing. Contact factory for availability.

(1) Includes linearity/conformity, hysteresis and repeatability.

## 18.0 MAQ20-ISOMV, MAQ20-ISOV & MAQ20-ISOI Address Map and Range Table

The table in this section outlines the MAQ20-ISOMV, MAQ20-ISOV and MAQ20-ISOI address space. Data in these registers contains all permanent and user settable information for module configuration, status, operation of all functions, data read/write, and data storage. Table columns list the following information:

**Start Address:** Start address for the specified quantity of addresses. The start address is offset by  $2000 * R$  where R is the module Registration Number.

**Read/Write:** Indicates whether data at the address is Read, Write or both.

**Number of Registers:** The number of 16 bit registers reserved for the specified contents.

**Contents:** Parameter stored at the specified address.

**Description:** Details, examples, limits, and default values for the parameter stored at the specified address.

**Data Range:** Valid data read from or written to an address range. Data not in this range which is written to an address may return a Modus Exception 3, Illegal Data, or may be ignored.

**Data Type:** The type of data stored at the specified address.

**ASCII** 0123456789ABCDEFGHIJKLMNOPQRSTUVWXYZabcdefghijklmnopqrstuvwxyz, -, " "  
**INT16** 16 bit integer value, 0 to 65535, unless otherwise indicated. Stored at a single address.  
**INT32** 32 bit integer value, 0 to 4294967295, unless otherwise indicated. Stored at two 16 bit addresses. MSB is stored at address N, LSB is stored at address N+1.

Table 3: MAQ20-ISOMV, MAQ20-ISOV, & MAQ20-ISOI Address Map

NOTE: When a module is registered in a system, addresses are offset by  $2000 * R$ , where R is the Registration Number. Refer to Section 9.0 for further details on Registration Number.

Address Range 0 - 99 : Module Information						
Start Address	Read/Write	Number of Registers	Contents	Description	Data Range	Data type
0	R	15	Device Description	MAQ20-ISOMV1 MAQ20-ISOV1 MAQ20-ISOV2	Characters, Numbers, "-" and Space	ASCII
19	R	11	Serial Number	S1234567-89	Characters, Numbers, "-" and Space	ASCII
30	R	5	Date Code	D1510	Characters, Numbers	ASCII
35	R	5	Firmware Rev	F1.00	Characters, Numbers and "."	ASCII
40	R	1	Input Channels	8 Input Channels	8	ASCII
41	R	1	Output Channels	0 Output Channels	0	ASCII
98	W	1	Module Detect	Any write will blink Status LED at 5Hz for 5 seconds	0 to 65,535	INT16
99	W	1	Reset Register	0 = Standard Reset, 255 = Reset to Default	0, 255	INT16

Address Range 100 - 699 : Module Configuration						
Start Address	Read/Write	Number of Registers	Contents	Description	Data Range	Data type
100	R/W	8	Input Range	Range for each of 8 channels	See Table 4	INT16
119	W	1	Save to EEPROM	0 = Range, Avg Weight	0	INT16
120	R/W	8	Average Weight	Weight for Average Calculation	0 to 15	INT16

Address Range 700 - 999 : Alarm Configuration						
Start Address	Read/Write	Number of Registers	Contents	Description	Data Range	Data type
700	R/W	1	Alarm Status, Low-Low	Write 0 to the corresponding channel bit to clear a Latched Alarm	0 to 65,535	INT16
701	R/W	1	Alarm Status, Low	Write 0 to the corresponding channel bit to clear a Latched Alarm	0 to 65,535	INT16
702	R/W	1	Alarm Status, High	Write 0 to the corresponding channel bit to clear a Latched Alarm	0 to 65,535	INT16
703	R/W	1	Alarm Status, High-High	Write 0 to the corresponding channel bit to clear a Latched Alarm	0 to 65,535	INT16
704	R/W	1	Alarm Enable	1 = Enabled 0 = Disabled	See Section 12.0	INT16
710	R/W	8	Alarm Configuration	Alarm Configuration	See Section 12.0	INT16
730	R/W	8	High Limit	High Alarm Limit	See Table 4	INT16
750	R/W	8	Low Limit	Low Alarm Limit	See Table 4	INT16
770	R/W	8	High Low Deadband	Deadband for High Low Alarm	See Table 4	INT16
790	R/W	8	High-High Limit	High-High Alarm Limit	See Table 4	INT16
810	R/W	8	Low-Low Limit	Low-Low Alarm Limit	See Table 4	INT16
830	R/W	8	High-High Low-Low Deadband	Deadband for High-High Low-Low Alarm	See Table 4	INT16

Address Range 1000 - 1699 : Module Data						
Start Address	Read/Write	Number of Registers	Contents	Description	Data Range	Data type
1000	R	8	Channel Data	Data for each of 8 Channels	See Table 4	INT16
1016	R	1	Alarm Status	Status of Low-Low Alarm	0 to 65,535	INT16
1017	R	1	Alarm Status	Status of Low Alarm	0 to 65,535	INT16
1018	R	1	Alarm Status	Status of High Alarm	0 to 65,535	INT16
1019	R	1	Alarm Status	Status of High-High Alarm	0 to 65,535	INT16
1030	R/W	8	Data Minimum	Minimum for each of 8 Channels	See Table 4	INT16
1050	R/W	8	Data Maximum	Maximum for each of 8 Channels	See Table 4	INT16
1070	R/W	8	Data Average	Average for each of 8 Channels	See Table 4	INT16
1090	R	8	Channel 0 Data	Last 8 readings for Channel 0	See Table 4	INT16
1100	R	8	Channel 1 Data	Last 8 readings for Channel 1	See Table 4	INT16
1110	R	8	Channel 2 Data	Last 8 readings for Channel 2	See Table 4	INT16
1120	R	8	Channel 3 Data	Last 8 readings for Channel 3	See Table 4	INT16
1130	R	8	Channel 4 Data	Last 8 readings for Channel 4	See Table 4	INT16

Address Range 1000 - 1699 : Module Data						
Start Address	Read/Write	Number of Registers	Contents	Description	Data Range	Data type
1140	R	8	Channel 5 Data	Last 8 readings for Channel 5	See Table 4	INT16
1150	R	8	Channel 6 Data	Last 8 readings for Channel 6	See Table 4	INT16
1160	R	8	Channel 7 Data	Last 8 readings for Channel 7	See Table 4	INT16

Address Range 1700 - 1899 : Input Ranges						
Start Address	Read/Write	Number of Registers	Contents	Description	Data Range	Data type
<b>1700</b>	<b>R</b>	<b>1</b>	<b>Range Count</b>	<b>Number of ranges supported</b>	<b>1 to 10</b>	<b>INT16</b>
<b>1710</b>	<b>R</b>	<b>1</b>	<b>Range 0</b>	<b>Engineering -fs.</b>	<b>-32,768 to 32,767</b>	<b>INT16</b>
1711	R	1	Range 0	Future Use	-32,768 to 32,767	INT16
1712	R	1	Range 0	Engineering +fs	-32,768 to 32,767	INT16
1713	R	1	Range 0	Future Use	-32,768 to 32,767	INT16
1714	R	1	Range 0	+fs & -fs multiplier Factor 10 <sup>X</sup>	-32,768 to 32,767	INT16
1715	R	1	Range 0	Engineering Units ("C", "V", etc)	A to Z	ASCII
1716	R	1	Range 0	Engineering Units ("C", "V", etc)	A to Z	ASCII
1717	R	1	Range 0	Future Use	-32,768 to 32,767	INT16
1718	R	1	Range 0	Count Value of -fs.	-32,768 to 32,767	INT16
1719	R	1	Range 0	Future Use	-32,768 to 32,767	INT16
1720	R	1	Range 0	Count Value of +fs.	-32,768 to 32,767	INT16
<b>1730</b>	<b>R</b>	<b>1</b>	<b>Range 1</b>	<b>Engineering -fs.</b>	<b>-32,768 to 32,767</b>	<b>INT16</b>
1731	R	1	Range 1	Future Use	-32,768 to 32,767	INT16
1732	R	1	Range 1	Engineering +fs	-32,768 to 32,767	INT16
1733	R	1	Range 1	Future Use	-32,768 to 32,767	INT16
1734	R	1	Range 1	+fs & -fs multiplier Factor 10 <sup>X</sup>	-32,768 to 32,767	INT16
1735	R	1	Range 1	Engineering Units ("C", "V", etc)	A to Z	ASCII
1736	R	1	Range 1	Engineering Units ("C", "V", etc)	A to Z	ASCII
1737	R	1	Range 1	Future Use	-32,768 to 32,767	INT16
1738	R	1	Range 1	Count Value of -fs.	-32,768 to 32,767	INT16
1739	R	1	Range 1	Future Use	-32,768 to 32,767	INT16
1740	R	1	Range 1	Count Value of +fs.	-32,768 to 32,767	INT16

Address Range 1900 - 1999 : Status Registers						
Start Address	Read/Write	Number of Registers	Contents	Description	Data Range	Data type
1900	R/W	1	Watchdog Flag	1 = Watchdog Reset, 0 = Normal	0 or 1	INT16
1901	R/W	1	BrownOut Flag	1 = BrownOut Reset, 0 = Normal	0 or 1	INT16
1906	R/W	1	Numeric Error	Increments when a value received is outside of the allowed range	0 to 65,535	INT16
1908	R/W	1	UART RX Error	UART RX Error Counter. Command Too Short	0 to 65,535	INT16
1909	R/W	1	UART RX Error	UART RX Error Counter. Command Too Long	0 to 65,535	INT16
1910	R/W	1	UART RX Error	UART RX Error Counter. Command received in invalid state	0 to 65,535	INT16

Table 4: MAQ20-ISOV2 Range Table

	Range	Standard Input Voltage	Equivalent Counts	Over/Under Range	Equivalent Counts	Volts per Count
<b>MAQ20-ISOV2</b>	0	-10V to +10V	-28671 to 28671	-11V to +11V	-31538 to 31538	$3.489 \times 10^{-6}$
	1	0V to +10V	0 to 28671	-1V to +11V	-2867 to 31538	$3.489 \times 10^{-6}$

Table 5: MAQ20-ISOV2 Special Count Readings

Reading	Condition
<b>32001</b>	Positive Differential Input Exceeded
<b>-32001</b>	Negative Differential Input Exceeded

## DATAFORTH WARRANTY

### Applying to Products Sold by Dataforth Corporation

a. **General.** Dataforth Corporation ("Dataforth") warrants that its products furnished under this Agreement will, at the time of delivery, be free from defects in material and workmanship and will conform to Dataforth's applicable specifications or, if appropriate, to buyer's specifications accepted in writing by Dataforth. DATAFORTH'S OBLIGATION OR LIABILITY TO BUYER FOR PRODUCTS WHICH DO NOT CONFORM TO THE ABOVE STATED WARRANTY SHALL BE LIMITED TO DATAFORTH, AT DATAFORTH'S SOLE DISCRETION, EITHER REPAIRING, REPLACING, OR REFUNDING THE PURCHASE PRICE OF THE DEFECTIVE PRODUCT(S) PROVIDED THAT WRITTEN NOTICE OF SAID DEFECT IS RECEIVED BY DATAFORTH WITHIN THE TIME PERIODS SET FORTH BELOW:

i. for all software products including licensed programs, thirty (30) days from date of initial delivery;

ii. for all hardware products including complete systems, one (1) year from date of initial delivery;

iii. for all special products, sixty (60) days from date of initial delivery; and

further, all products warranted hereunder for which Dataforth has received timely notice of nonconformance must be returned FOB to Dataforth's plant in Tucson, Arizona USA within thirty (30) days after the expiration of the warranty periods set forth above.

The foregoing warranties shall not apply to any products which Dataforth determines have, by buyer or otherwise, been subjected to operating and/or environmental conditions in excess of the maximum value established therefore in the applicable specifications, or any products that have been the subject of mishandling, misuse, misapplication, neglect, improper testing, repair, alteration or damage. THE PROVISIONS OF THE FOREGOING WARRANTIES EXTEND TO BUYER ONLY AND NOT TO BUYER'S CUSTOMERS OR USERS OF BUYER'S PRODUCTS. THE DATAFORTH STANDARD WARRANTY IS IN LIEU OF ALL WARRANTIES OF MERCHANTABILITY AND FITNESS FOR A PARTICULAR PURPOSE OR USE AND ALL OTHER WARRANTIES WHETHER EXPRESS, IMPLIED OR STATUTORY, EXCEPT AS TO TITLE. THE DATAFORTH STANDARD WARRANTY MAY BE CHANGED BY DATAFORTH WITHOUT NOTICE.

b. **Buyer Indemnity.** Buyer agrees to indemnify and hold Dataforth harmless from and against any and all claims, damages and liabilities whatsoever asserted by any person, entity, industry organization, government, or governmental agency of any country resulting directly or indirectly (i) from any acts not authorized by Dataforth in writing or any statements regarding the

products inconsistent with Dataforth's product documentation or standard warranty, or (ii) from any breach or threatened breach by buyer, or by any of its employees or agents, of any term, condition or provision of this Warranty or (iii) from any warranty, representation, covenant or obligation given by buyer to any third party and not expressly provided for in this Warranty or (iv) for any non-compliance (in any form) of the products with any necessary or mandatory applicable laws, regulations, procedures, government or industry policies or requirements related to the use, sale or importation of the products. Such indemnification shall include the payment of all reasonable attorneys' fees and other costs incurred by Dataforth in defending such claim.

c. **Limitation on Damages.**

(1) IN NO EVENT SHALL DATAFORTH, ITS SUPPLIERS, LICENSORS, SERVICE PROVIDERS, EMPLOYEES, AGENTS, OFFICERS, AND DIRECTORS BE LIABLE FOR INDIRECT, SPECIAL, INCIDENTAL, COVER, ECONOMIC, PUNITIVE, ACTUAL, EXEMPLARY, CONSEQUENTIAL OR OTHER DAMAGES OF ANY NATURE INCLUDING, WITHOUT LIMITATION, LOST PROFITS OR REVENUES, COSTS OF REPLACEMENT PRODUCTS, LOSS OR DAMAGE TO DATA ARISING OUT OF THE USE OR INABILITY TO USE ANY DATAFORTH PRODUCT.

(2) IN NO EVENT SHALL DATAFORTH BE LIABLE FOR DIRECT, SPECIAL, INDIRECT, INCIDENTAL OR CONSEQUENTIAL DAMAGES OF ANY NATURE RESULTING FROM BUYER'S NONCOMPLIANCE (IN ANY FORM) WITH ALL NECESSARY OR MANDATORY APPLICABLE LAWS, REGULATIONS, PROCEDURES, GOVERNMENT POLICIES OR REQUIREMENTS RELATED TO THE USE, SALE OR IMPORTATION OF PRODUCTS.

(3) IN NO EVENT WILL THE COLLECTIVE LIABILITY OF DATAFORTH AND ITS SUPPLIERS, LICENSORS, SERVICE PROVIDERS, EMPLOYEES, AGENTS, OFFICERS, AND DIRECTORS TO ANY PARTY (REGARDLESS OF THE FORM OF ACTION, WHETHER BASED UPON WARRANTY, CONTRACT, TORT, OR OTHERWISE) EXCEED THE GREATER OF EITHER US\$1000.00 (ONE THOUSAND DOLLARS U.S.A. CURRENCY) OR THE AMOUNT PAID TO DATAFORTH FOR THE APPLICABLE PRODUCT OR SERVICE OUT OF WHICH LIABILITY AROSE.

(4) DATAFORTH'S LIABILITY ARISING OUT OF THE PRODUCTION, SALE OR SUPPLY OF PRODUCTS OR THEIR USE OR DISPOSITION, WHETHER BASED UPON WARRANTY, CONTRACT, TORT OR OTHERWISE, SHALL NOT EXCEED THE GREATER OF EITHER US\$1000.00 (ONE THOUSAND DOLLARS U.S.A. CURRENCY) OR THE ACTUAL



PURCHASE PRICE PAID BY BUYER FOR DATAFORTH'S PRODUCTS. DATAFORTH'S LIABILITY FOR ANY CLAIM OF ANY KIND SHALL IN NO CASE EXCEED THE OBLIGATION OR LIABILITY SPECIFIED IN THIS WARRANTY.

d. **Technical Assistance.** Dataforth 's Warranty as hereinabove set forth shall not be enlarged, diminished or affected by, and no obligation or liability shall arise or grow out of, Dataforth's rendering of technical advice, facilities or service in connection with buyer's order of the products furnished hereunder.

e. **Warranty Procedures.** Buyer shall notify Dataforth of any products which it believes to be defective during the applicable warranty period and which are covered by the Warranty set forth above. Buyer shall not return any products for any reason without the prior authorization of Dataforth and issuance of a Return Material Authorization ("RMA") number. After issuance of a RMA number, such products shall be promptly returned by buyer (and in no event later than thirty (30) days after the Warranty expiration date), transportation and insurance prepaid, to Dataforth's designated facility for examination and testing. Dataforth shall either repair or replace any such products found to be so defective and promptly return such products to buyer, transportation and insurance prepaid. Should Dataforth's examination and testing not disclose any defect covered by the foregoing Warranty, Dataforth shall so advise buyer and dispose of or return the products in accordance with buyer's instructions and at buyer's sole expense, and buyer shall reimburse Dataforth for testing expenses incurred at Dataforth's then current repair rates.

f. **Repair Warranty.** Dataforth warrants its repair work and/or replacement parts for a period of ninety (90) days from receipt by buyer of the repaired or replaced products or for the remainder of the warranty period for the initial delivery of such order as set forth in paragraph a above, whichever is greater.

g. **Critical Applications.** Certain applications using Dataforth's products may involve potential risks of death, personal injury, or severe property or environmental damage ("Critical Applications"). DATAFORTH'S PRODUCTS ARE NOT DESIGNED, INTENDED, AUTHORIZED, OR WARRANTED TO BE SUITABLE FOR USE IN LIFE-SUPPORT DEVICES OR SYSTEMS, SAFETY EQUIPMENT, NUCLEAR FACILITY APPLICATIONS OR OTHER CRITICAL APPLICATIONS WHERE MALFUNCTION OF THE PRODUCT CAN BE EXPECTED TO RESULT IN PERSONAL INJURY, DEATH OR SEVERE PROPERTY DAMAGE. BUYER USES OR SELLS SUCH PRODUCTS FOR USE IN SUCH CRITICAL APPLICATIONS AT BUYER'S OWN RISK AND AGREES TO DEFEND, INDEMNIFY AND HOLD HARMLESS DATAFORTH FROM ANY AND ALL DAMAGES, CLAIMS, PROCEEDINGS, SUITS OR EXPENSE RESULTING FROM SUCH USE.

h. **Static Sensitive.** Dataforth ships all product in anti-static packages. Dataforth's Warranty as hereinabove set forth shall not cover warranty repair, replacement, or refund on product or devices damaged by static due to buyer's failure to properly ground.



## Application Support

Dataforth provides timely, high-quality product support. Call **1-800-444-7644 TOLL-FREE**.

## Returns/Repair Policy

All warranty and repair requests should be directed to the Dataforth Customer Service Department at (520) 741-1404. If a product return is required, request a Return Material Authorization (RMA) number. You should be ready to provide the following information:

1. Complete product model number.
2. Product serial number.
3. Name, address, and telephone number of person returning product.
4. Special repair instructions.
5. Purchase order number for out-of-warranty repairs.

The product should be carefully packaged, making sure the RMA number appears on the outside of the package, and ship prepaid to:

**Dataforth Corporation**  
**3331 E. Hemisphere Loop**  
**Tucson, AZ 85706 USA**

An RMA Request Form and instructions for processing are also found at [www.dataforth.com](http://www.dataforth.com).

The information provided herein is believed to be reliable; however, DATAFORTH assumes no responsibility for inaccuracies or omissions. DATAFORTH assumes no responsibility for the use of this information, and all use of such information shall be entirely at the user's own risk. Application information is intended as suggestions for possible use of the products and not as explicit performance in a specific application. Prices and specifications are subject to change without notice. No patent rights or licenses to any of the circuits described herein are implied or granted to any third party. DATAFORTH does not authorize or warrant any DATAFORTH product for use in life support devices and/or systems.